



ePr+BioClock

Quick-Start Installation Guide

June 18, 2015

eCore
SOFTWARE INC.

ePro BioClock Quick-Start Installation

The ePro BioClock main installation panel provides installing the ePro BioClock software as well as the device drivers used by the fingerprint scanner device. Launch the ePro BioClock installer by inserting the installation CD into the CD-ROM drive. The installation program should automatically start. If it does not, navigate to the root folder of the CD and click Setup.exe. The following installation menu will be displayed.



The “Install ePro BioClock Software” button installs the ePro BioClock software. The fingerprint scanner device drivers must also be installed. After both installations are complete, plug the fingerprint scanner into a USB port. The computer will recognize the device and the ePro BioClock will be ready to use.

The installation instructions and user’s manual are delivered as Adobe PDF documents. Download “Adobe Acrobat Reader” to read the documents if it is not already installed.

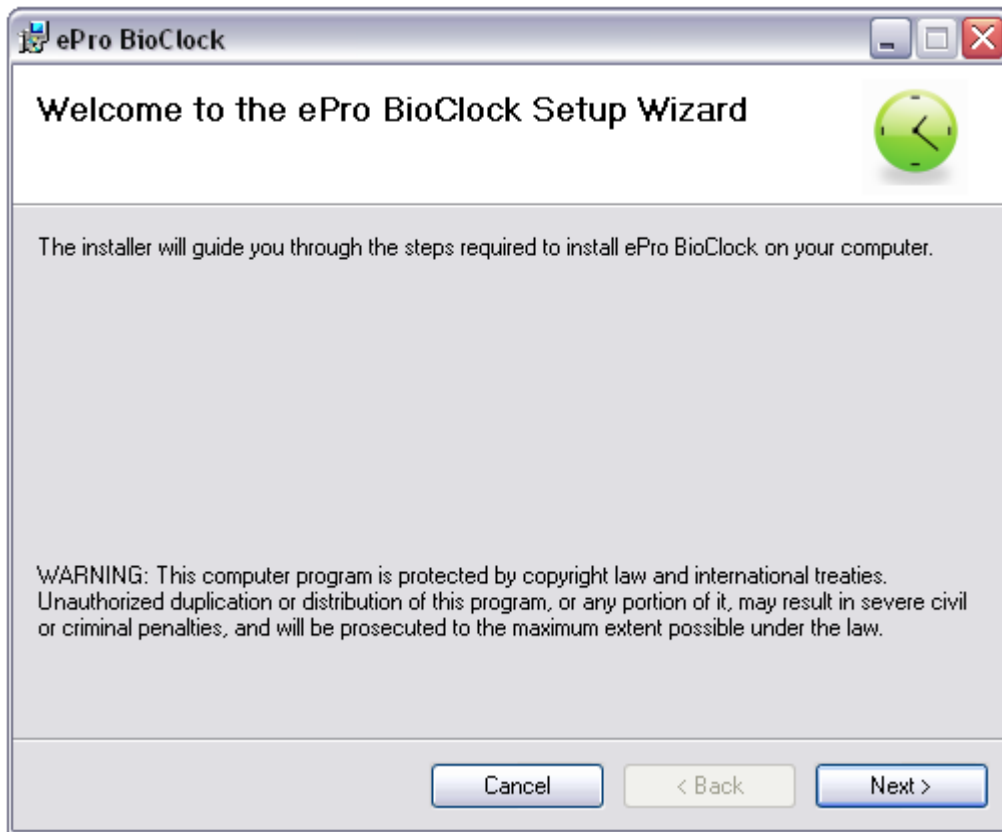
NOTE: If “Adobe Acrobat Reader” is not installed, the documents will not launch when the buttons are clicked.

Click “Explore CD Contents” to view the access on the installation CD.

The following sections describe the installation of the ePro BioClock software and the fingerprint scanner device drivers.

1. ePro BioClock Software Installation and Required Components

The ePro BioClock installation dialog is displayed after clicking the installation button from the main installation panel. The following wizard is displayed.



1.1 Microsoft Components Installation

The ePro BioClock software is dependent on several components provided that are provided on the installation disk. All components must all be installed for all functions of the ePro BioClock program to function properly. The computer setup is checked at installation for required components. If one of the components is not installed, the ePro BioClock installer will display information about the component and request confirmation before installing.

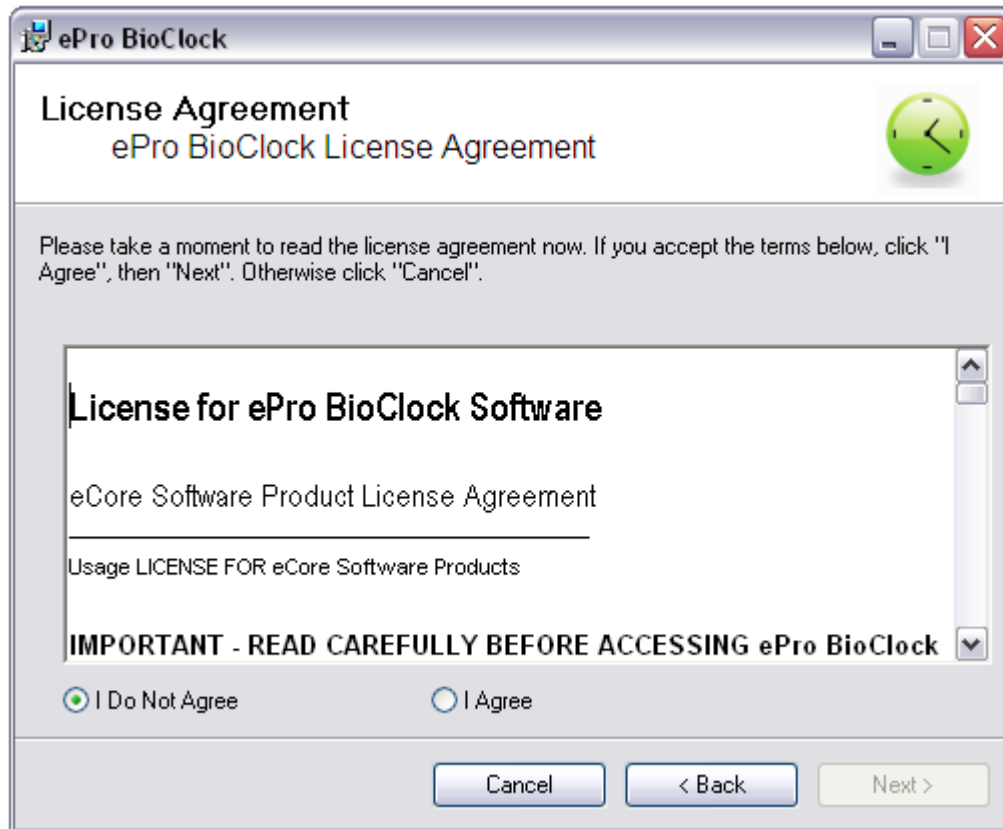
To ensure proper functioning of all ePro BioClock functions, confirm the installation of each component when prompted by the installer.

1.2 ePro BioClock Software

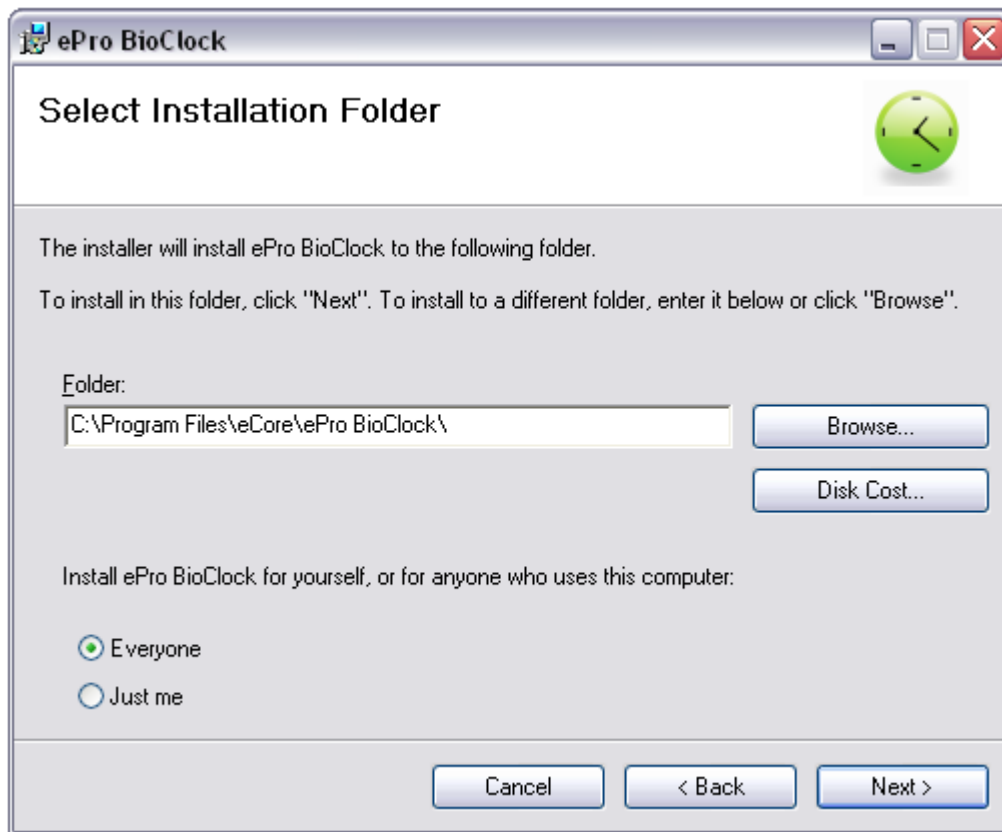
Install the ePro BioClock software. Setup.exe installs the ePro BioClock software and creates a shortcut on the desktop to the ePro BioClock software. It also creates a program group on the start menu.



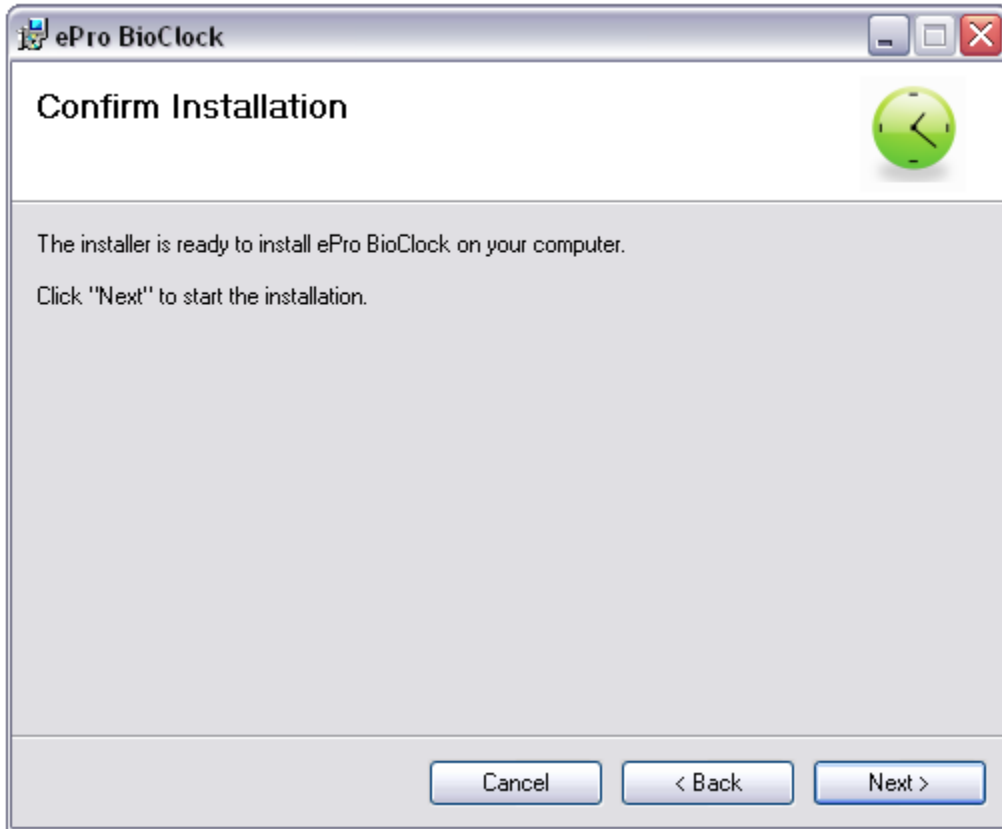
The license agreement prompt will be displayed and must be agreed to before proceeding with the installation.



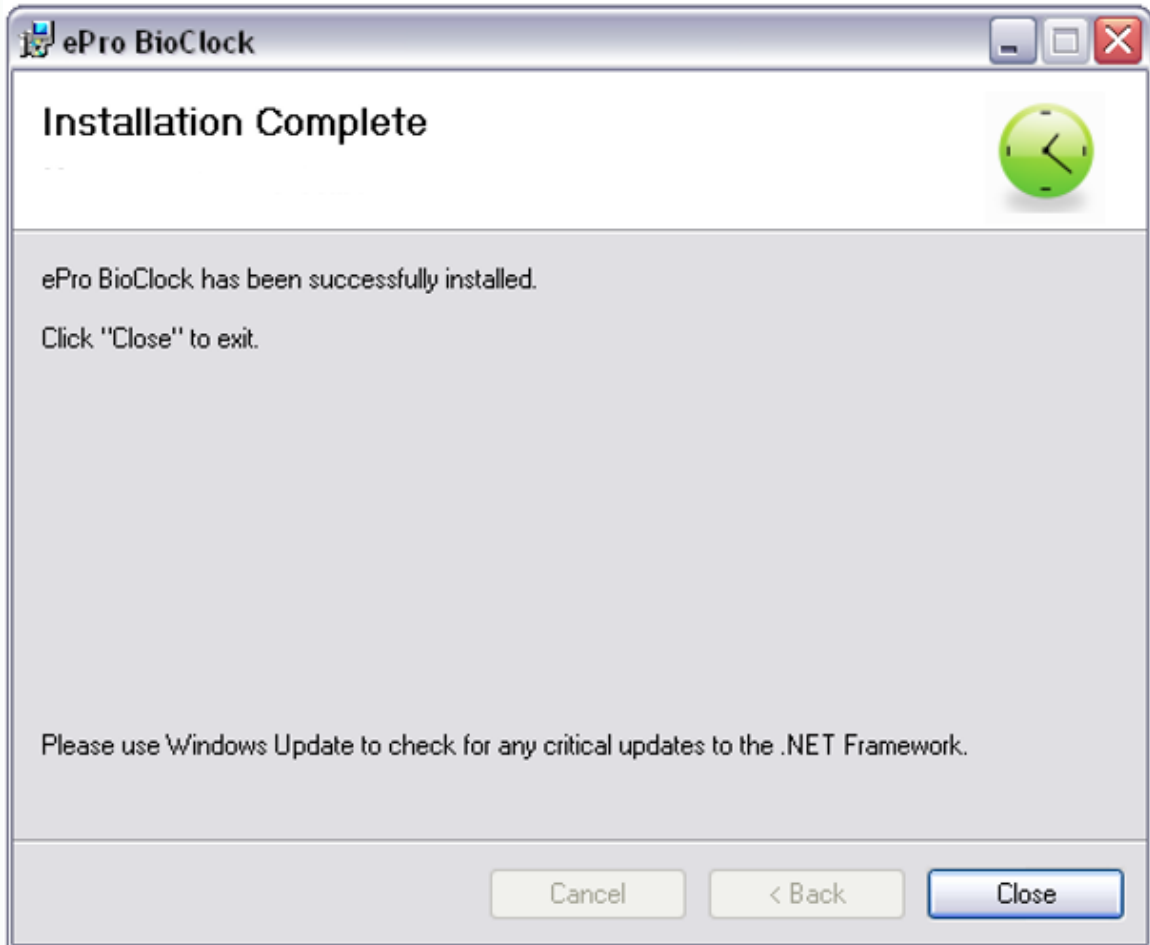
Accept the default folder location to install the ePro BioClock. If an alternate location is selected, the program shortcuts on the desktop and the Start Menu will not work correctly. Shortcuts can still be created to the new location of the location is changed.



Confirm the installation of the ePro BioClock program. The installation will then proceed. Previous versions of the software will be removed.

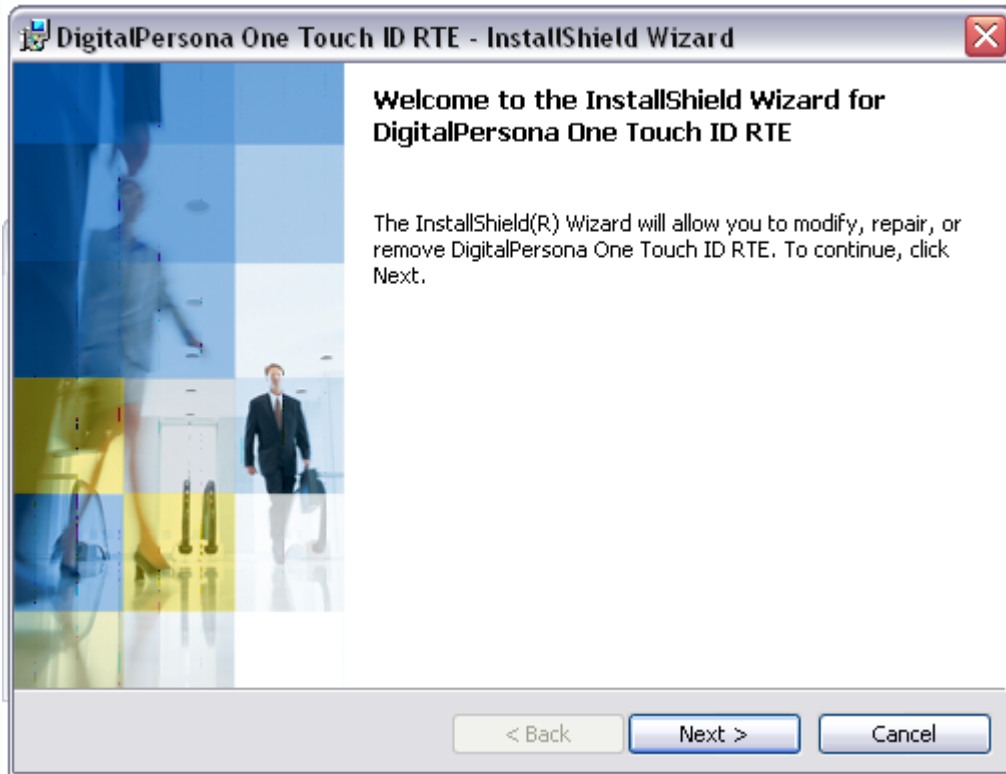


After installation is complete, the installation computer must be rebooted before the ePro BioClock software is used.



2. Fingerprint Scanner Device Driver Installation

The ePro BioClock requires the device drivers to communicate with the fingerprint scanner device. Click “Install Fingerprint Reader Drivers” to launch the driver installation program. The following dialog will be displayed:



Follow the installation instructions to complete the installation.

3. Attach the Fingerprint Scanner

The fingerprint scanner devices connect to a standard USB port. After the software is installed and the device is attached, the ePro BioClock system is ready to use.